

Rabbit Anti-Human FSHR Polyclonal Antibody

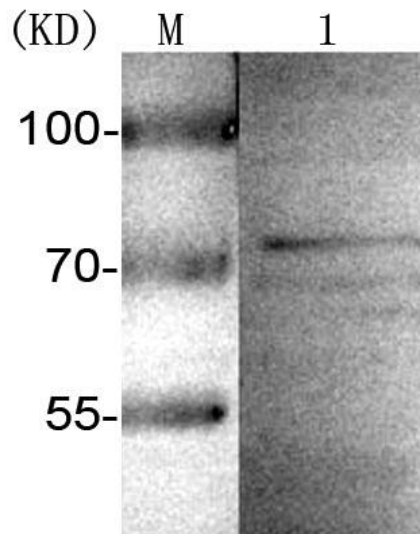
Catalog No. Size
HS-PP-0441 100 µl



Description	Rabbit Polyclonal to FSHR
Physical State	Liquid
Antibody Concentration	1 mg/ml
Antibody form	Affinity isolated antibody
Tested applications	WB, Indirect ELISA
Species reactivity	Human
Antibody Purity	Protein A purified
Suggested Dilution	1:400 for WB and IHC
Range	1:5,000- 1:100,000 for ELISA
Storage Instructions	Store at 2-8°C for up to 6 months and -20°C for long term storage in small aliquots to prevent freeze-thaw cycles.
Immunogen	This anti-FSHR antibody is generated from rabbits immunized with a KLH conjugated synthetic peptide.
Background Information	FSHR (follicle stimulating hormone receptor) is a protein-coding gene. Diseases associated with FSHR include ovarian hyperstimulation syndrome, and mucinous cystadenocarcinoma, and among its related super-pathways are Class A/1 (Rhodopsin-like receptors) and Signaling by GPCR. GO annotations related to this gene include protein binding and follicle-stimulating hormone receptor activity. An important paralog of this gene is LHCGR.
Note	For in vitro research use only, not for diagnostic or therapeutic use. This product is not a medical device.

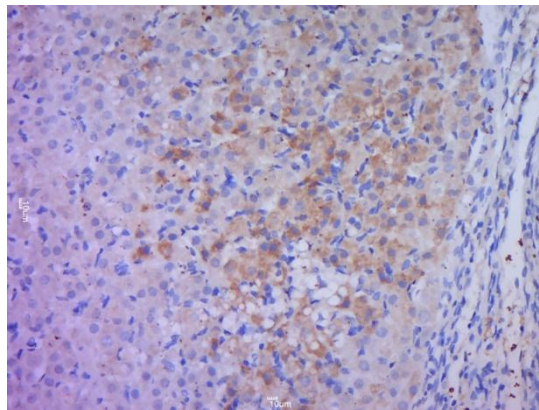
Rabbit Anti-Human FSHR Polyclonal Antibody

Catalog No. Size
HS-PP-0441 100 µl



Whole cell lysates of human intestines (lane 1:40ug) were subjected to SDS PAGE followed by western blot with HS-PP-0441 antibody at dilution of 1:400.

Predicted molecular weight: 78.2 kDa.



Immunohistochemical of paraffin-embedded rat ovary using FSHR antibody(HS-PP-0441) at dilution of 1:400.